

Fire Insurance Plans

Address

Sample Site, Sample Street, Anytown, UK

Your reference

Sample

Groundsure reference

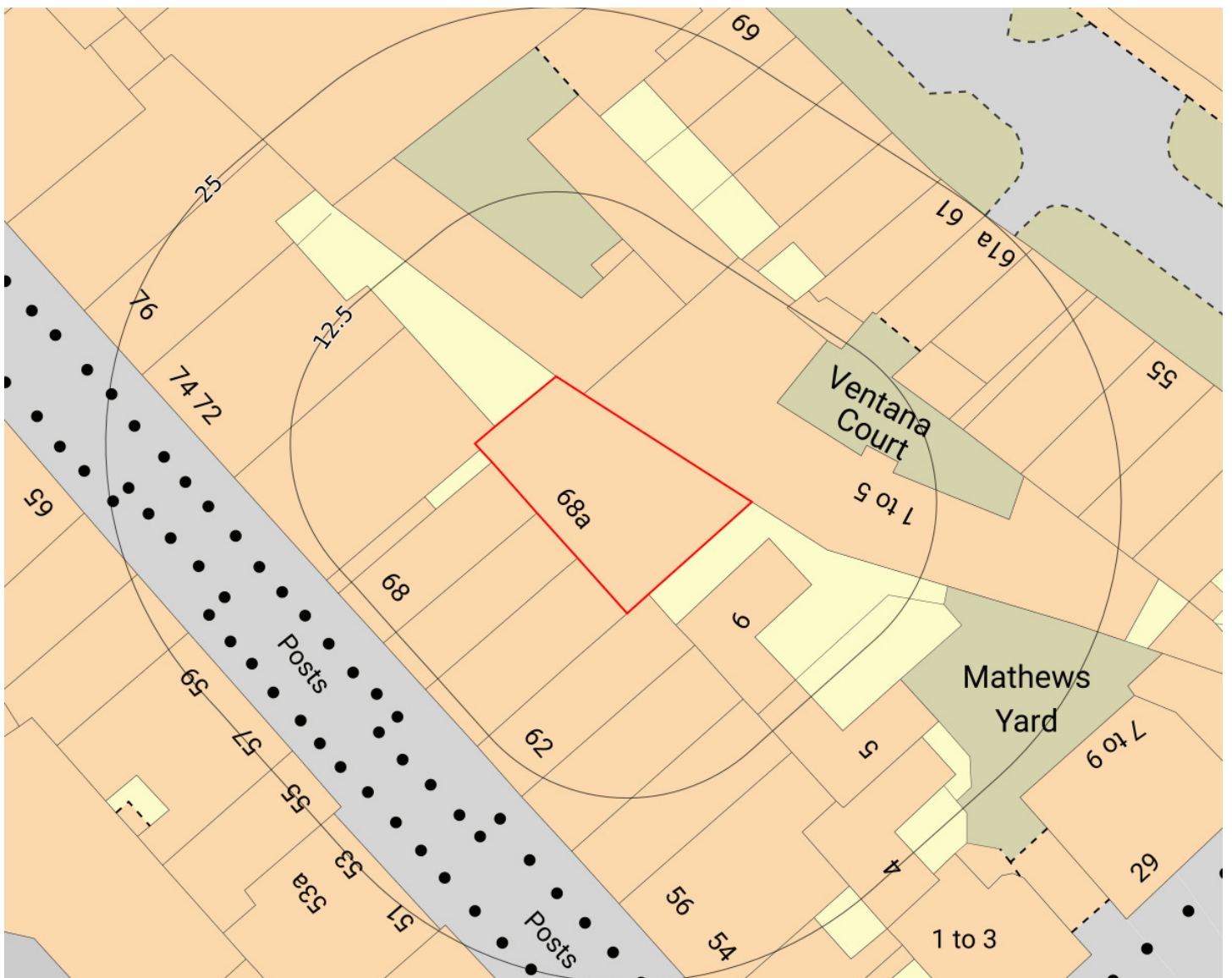
Sample_FirePlans

Date

10/04/2024

Grid reference

123456 123456



Contact us with any questions at:

info@groundsure.com

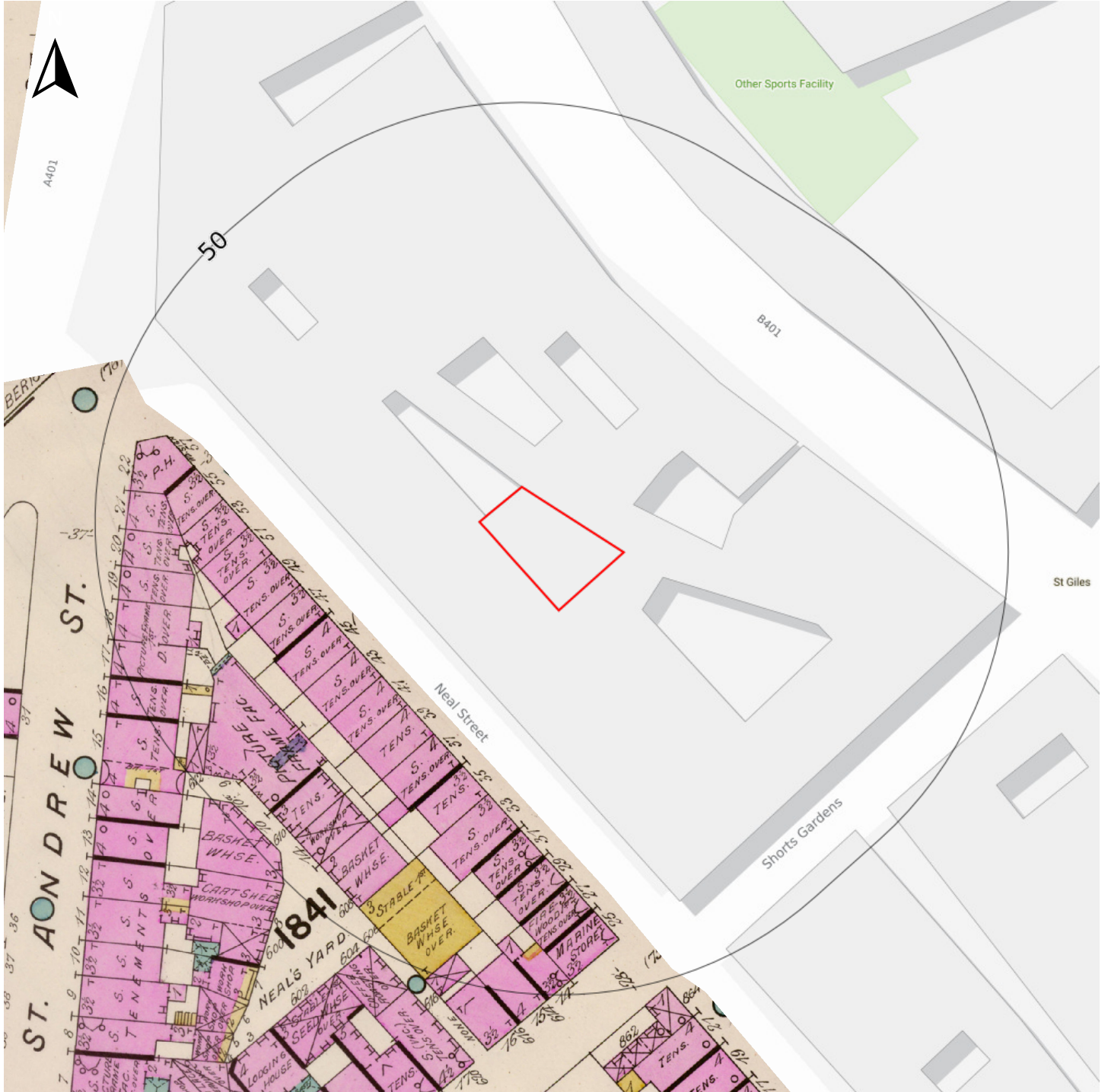
01273 257 755

Certified



Corporation

1888 London



1928 London



1952, 1958 London, 2-plan composite



Legend

CHAS. E. GOAD, LTD. **EXPLANATION OF SIGNS** 55 CROUCH HILL
CIVIL ENGINEERS LONDON N. 4.

USED ON **INSURANCE PLANS OF TOWNS & CITIES**

ABBREVIATIONS

ASB. ASBESTOS
CORR. CORRUGATED IRON
D.I.D. DOUBLE IRON DOORS
DPA. DRAPERY
D. DWELLING
ELECT. ELECTRICIAN
(E.M.) ELECTRIC MOTORS
(ENG.) STEAM ENGINE
FURNE. FURNITURE
GAR. GARAGE
(G.E.) GAS ENGINE
H.W. HARDWARE
I.COLS. IRON COLUMNS OR STEEL STANCHIONS
JWLX. JEWELLERY
M.CL. METAL CLAD
M.W. MANCHESTER WAREHOUSE
M.L. MATCH (OR WOOD) LINED
OIL. OIL & COLOR
(O.E.) OIL ENGINE
P.H. PUBLIC HOUSE
S. SHOP
S.I.D. SINGLE IRON DOORS
S.I.S. SINGLE IRON SHUTTERS
TAI. TAILORS
TENS. TENEMENTS
W.G. WIRED GLASS
W.N. WIRE NETTING OVER GLASS.

COLORS

BRICK, STONE OR CONCRETE
WOOD
SKYLIGHTS ON 1 & 2 STORY BUILDINGS
SKYLIGHTS ON HIGHER BUILDINGS
METAL BUILDINGS
TIMBER PILED OR STACKED

WALLS

PARTY WALL 2 STORIES OR OVER, A PROBABLE FIRE CUT OFF
ENTIRE WALL, BUT DOUBTFUL AS FIRE CUT OFF
DEFECTIVE WALL - IMPERFECT
WALL ABOVE, IRON COLS: UNDER
WALL SOME FLOORS ONLY (OR WOOD OR PLASTER PARTITION)
ABOVE ROOF 6" TO 1'-6"
— D9 — 1'-6" TO 2'-6"
m.l. MATCH OR WOOD LINED
WOOD CLAD WITH CORRUGATED IRON

OPENINGS

PASSAGE UNDER
ON ALL FLOORS } UNPROTECTED
SOME FLOORS ONLY }
ALL FLOORS (PROTECTED) } SINGLE IRON DOORS
ALL FLOORS (SOME PROTECTED) }
SOME FLOORS ONLY (PROTECTED) } DOUBLE IRON DOORS
ALL FLOORS (SOME PROTECTED) }
ALL FLOORS (PROTECTED) }
SOME FLOORS ONLY (PROTECTED) }
WOOD LOADING DOOR }
IRON LOADING DOOR }

WINDOWS

ON ALL OR MOST FLOORS } UNPROTECTED
MORE THAN USUAL }
OVERLOOKING }
NEARLY ALL GLASS }
OPENINGS THRO' & WINDOWS OVER }
ON SOME FLOORS ONLY }
PROTECTED BY WIRED GLASS }
PROTECTED BY SINGLE IRON SHUTTERS }
PROTECTED BY DOUBLE IRON SHUTTERS. }
WINDOWS IN FRONT & REAR OF BUILDINGS UNDERSTOOD }
UNLESS OTHERWISE SHOWN }

FLOORS

1, 2, 3, 3½ &c. ON BUILDINGS ARE NUMBER OF STORIES ABOVE GROUND
(3½ = 3 FLOORS & ATTIC)
2 & 2B MEANS 2 STORIES & 2 BASEMENTS BAST & SUB-BASEMENT.

SKYLIGHTS

△ LESS THAN 50 SQUARE FEET (SAY 10'x5', OR 7'x7')
OPENINGS THROUGH 2 FLOORS UNDER (EACH STROKE
DENOTES AN OPENING.)
WITH WELL HOLE THROUGH 3 FLOORS } OVER 50 SQ. FT. TO SCALE
LANTERN LIGHT, SIDES ONLY GLASS. }
OR VENT. OR RAISED VENTILATOR }

HOISTS & LIFTS

OPEN
OPEN TO STREET
OPEN (WOOD FLOORS) } ENCLOSED BRICK OR FIRE RESISTING
ENCLOSED WOOD OR PLASTER } WIRED GLASS DOORS
IRON DOORS SHOWN AS EXPLAINED UNDER "OPENINGS"

ROOFS

ASB ASBESTOS
C CONCRETE
CORR. CORRUGATED IRON
T TILE
P PATENT (FELT &c.)
O SLATE
T TILE

PROFILES
WITH NORTH LIGHTS

SUNDRIES

STEAM BOILERS
BOILER SET IN BRICK
FACTORY CHIMNEYS
STEAM ENGINE
OVERHANGING WOOD CORNICE
FIRE ALARM BOX
— D9 — ON KEY PLAN
HYDRANT
HYDRAULIC HYDRANT
PRIVATE HYDRANT OR STAND PIPE
DOUBLE HYDRANT
SALT WATER HYDRANT
SPRINKLER OR AUTO ALARM BELL

REFERENCE NUMBERS

NUMBERS PARALLEL WITH STREET ARE EXISTING
STREET N^o
WHERE TWO SETS OF STREET N^o IN SAME BLOCK
COINCIDE, ADDITIONAL ARBITRARY N^o ARE GIVEN
TO ONE SET (500 & UPWARDS)
WHERE BUILDINGS TO WHICH THEY APPLIED ARE
DEMOLISHED, STREET & ARBITRARY N^o ARE SHOWN
& CROSSED THROUGH ON REVISION
— 48' — ARE STREET WIDTHS.
(37') ARE HEIGHTS OF GROUND ABOVE ORDNANCE DATUM.
HEIGHT IN FEET OF ADJOINING BUILDINGS WHERE
STORIES DIFFER IN HEIGHT
SIZES OF WATER MAINS SUPPLYING HYDRANTS

COPYRIGHT 1926

Further Information

This report contains all Goad plans available for your chosen location. Where plans cover only part of the mapped area, modern background mapping has been included for additional context.

Charles E. Goad

Goad plans were originally produced as Fire Insurance Plans (F.I.Ps) by Charles E. Goad Ltd. in the late 19th century. In addition to showing the materials used in building construction and the location of water supplies, the maps show the location of particular fire hazards such as chemical storage and processing areas, ovens and other such areas which are of interest to contaminated land practitioners. The first plans appeared in 1886, and by 1896 the collection comprised 73 volumes of plans for 37 cities. By 1912 the collection had grown to 124 volumes across 57 cities, though following this there was no significant expansion to new towns. Many cities saw significantly expanded coverage between 1928 and 1935, and regular revision of plans continued until the 1970s.

The maps were produced for the most important towns and cities in Great Britain at a scale of 1:480 (1 inch to 40 feet). Coverage for these towns varies according to the town's relative importance at the time, from an industrial and social perspective. All maps shown in this report are north-orientated and seamlessly stitched together with other maps of a similar age. Gaps in the mapping are filled in with contemporary mapping to provide a clear location context for the study site.

Contact Us

Groundsure Limited: Nile House, Nile Street, Brighton, BN1 1HW

info@groundsure.com ↗

01273 257 755

Terms and Conditions

Groundsure's Terms and Conditions can be viewed online at this link:

www.groundsure.com/terms-and-conditions-april-2023/ ↗